



GAT MONTHLY MEMBERSHIP PROGRESS REPORT

Results as of: 2/28/2023

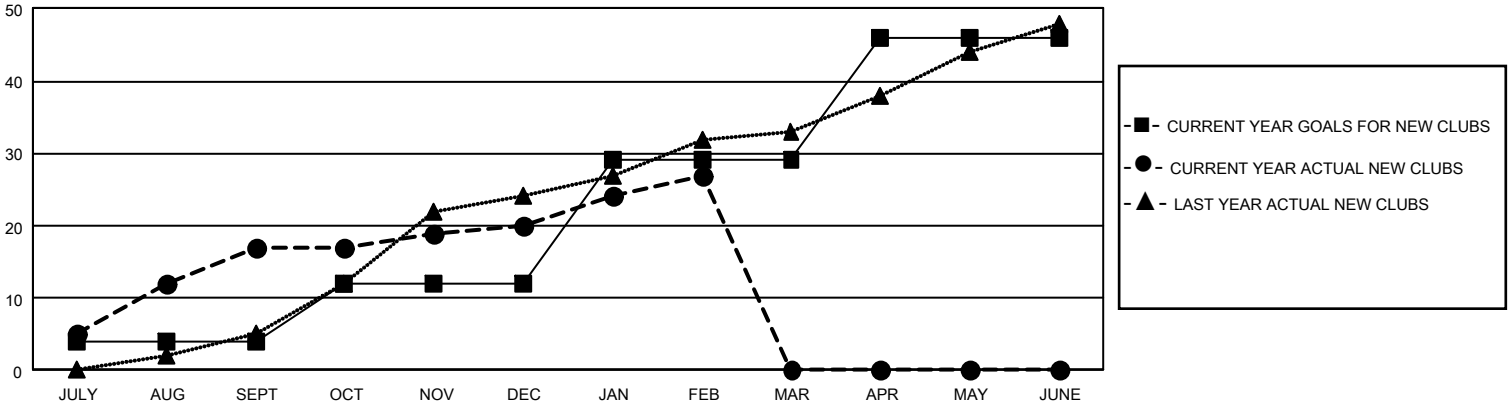
GAT Constitutional Area 7

REPORT DOES NOT INCLUDE CLUBS IN UNDISTRICTED AREAS.

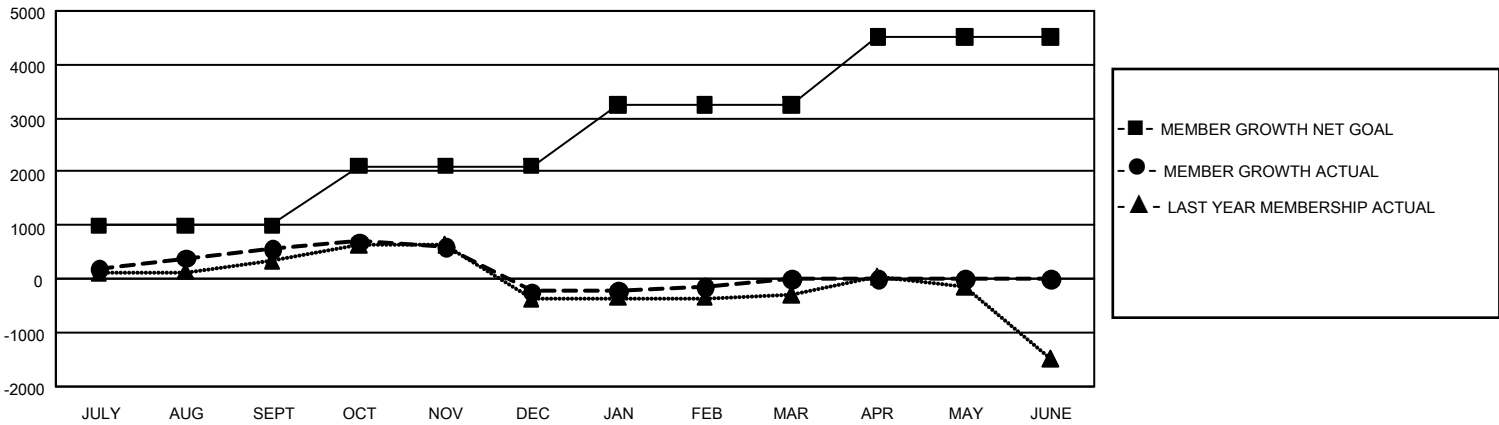
Clubs			
RESULTS FOR 2022-2023			
QUARTER	NEW CLUB GOAL	NEW CLUBS	DROPPED CLUBS
JULY/AUG/SEPT	12	17	13
OCT/NOV/DEC	24	3	15
JAN/FEB/MAR	51	7	2
APR/MAY/JUNE	51	0	0

Members			
RESULTS FOR 2022-2023			
QUARTER	MEMBER GROWTH NET GOAL	MEMBER GROWTH ACTUAL	DROPPED MEMBERS ACTUAL (including transfers)
JULY/AUG/SEPT	996	1,894	990
OCT/NOV/DEC	1105	1,218	1,881
JAN/FEB/MAR	1149	825	653
APR/MAY/JUNE	1270	0	0

GOALS AND ACTUAL NEW CLUBS CUMULATIVE



GOALS AND ACTUAL MEMBERS CUMULATIVE



DROPPED CLUBS: 30	
DROPPED MEMBERS	
DECEASED	355
CLUB CANCELLED	140
OTHER	3,030
TOTAL	3,525

959 CLUBS OF 1,870 ADDED 1 OR MORE NEW MEMBERS

[CLICK HERE FOR CUMULATIVE MEMBERSHIP DATA](#)

GENDER DISTRIBUTION	
MALE	24,456 (58.04%)
FEMALE	17,665 (41.92%)
NON BINARY	6 (0.01%)
PREFER NOT TO ANSWER	8 (0.02%)
TOTAL FAMILY UNIT MEMBERS	7,294
FAMILY MEMBERS PAYING HALF DUES	3,927